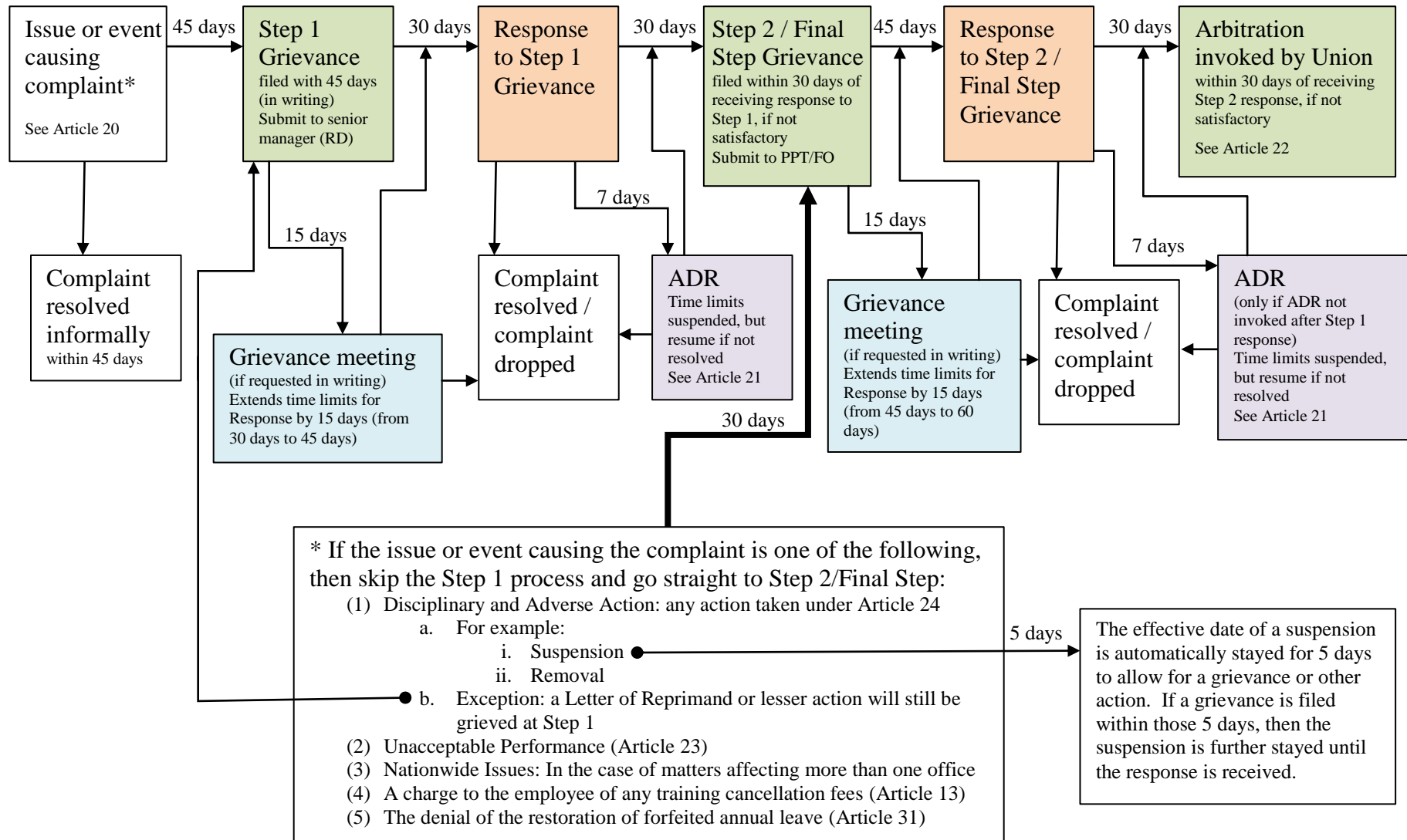


# Negotiated Grievance Procedure Flow Chart – IAMAW FD1 NFFE Local 1998 & Passport Services

For the Master Agreement effective July 20, 2009



All “days” are calendar days. If a deadline falls on a non-workday (e.g., weekend), then the deadline is extended to the next workday. If a deadline for either Party falls during the week of Thanksgiving or the week that Christmas is observed, then the deadline is automatically extended 7 days.